

# MMD SOURCING SOLUTIONS

Your One Stop Sourcing Solution Partner

[info@mmdsolutions.co.in](mailto:info@mmdsolutions.co.in)





# ABOUT US

**MMD Sourcing Solutions** is a leading name in the field of engineering procurement and efficient distribution.

We specialize in delivering reliable, high-quality sourcing solutions that align with both technical and commercial requirements.

With a focus on innovation, optimization, and end-to-end sourcing efficiency, we ensure that our clients receive the best products and services tailored to their specific industry demands







# MISSION

To empower industries with smart sourcing strategies, enhanced cost efficiency, and sustainable supply chains that drive productivity, profitability, and growth.

We aim to bridge the gap between technology, cost, and quality through smart procurement solutions.

# VISION

To be recognized globally as the most reliable and innovative sourcing partner, offering sustainable, competitive value-driven engineering solutions to industries across the world.





# OUR STRENGTHS

- **Deep engineering knowledge combined with commercial expertise**
- **Strong vendor network across domestic and international markets**
- **Proven track record in cost reduction and value creation**
- **Digital transformation support for sourcing operations**
- **Data-driven spend analytics and benchmarking systems**
- **Transparent, ethical, and customer-focused working approach**





# Why Choose MMD

**Proven expertise in cost reduction through intelligent sourcing strategies**

**Extensive technical understanding across multiple product categories**

**Reliable and transparent supply chain management practices**

**Strong and diverse global vendor network**

**Commitment to quality, precision, and long-term partnerships**





# CORE SERVICES

## 01 Benchmarking



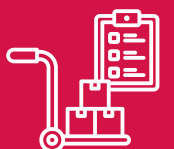
We evaluate supplier performance, pricing, and technical capabilities to ensure you always get the best value in the market.

## 02 Sourcing Optimization



Through detailed spend analytics and supplier assessment, we enhance cost efficiency and procurement performance.

## 03 International Procurement



We collaborate with global suppliers for high-quality materials, ensuring compliance with industry standards and timelines.

## 04 Cost-Down Programs



We continuously identify and execute cost improvement opportunities through process optimization and supplier partnerships

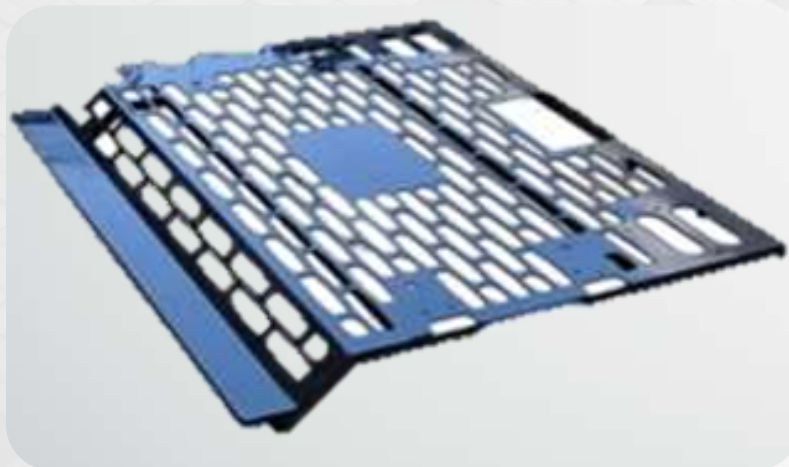


- Think Customer First
- Honesty & Integrity
- Achievement through Collaboration
- Drivings Innovation



# PRODUCT CATEGORIES

## FABRICATION UNIT PRODUCTS

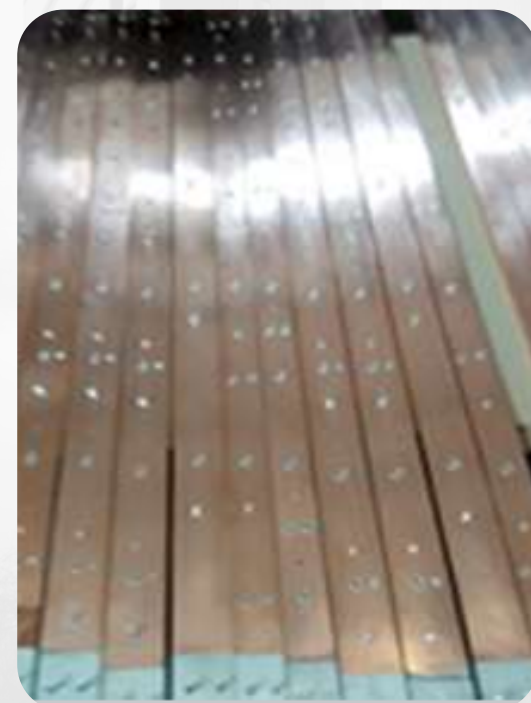


## SOFT TOOL UNIT PRODUCTS





## BUSBAR UNIT PRODUCTS



## STAMPING UNIT PRODUCTS

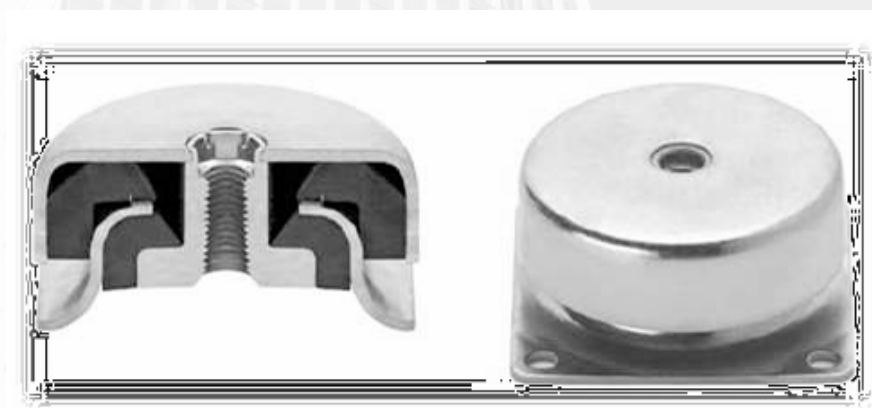




## PRODUCTS – MACHINE FEET



## PRODUCTS – CONICAL MOUNTS & BUFFERS



## PRODUCTS – BUFFERS & MOUNTS -FOR RAILWAYS

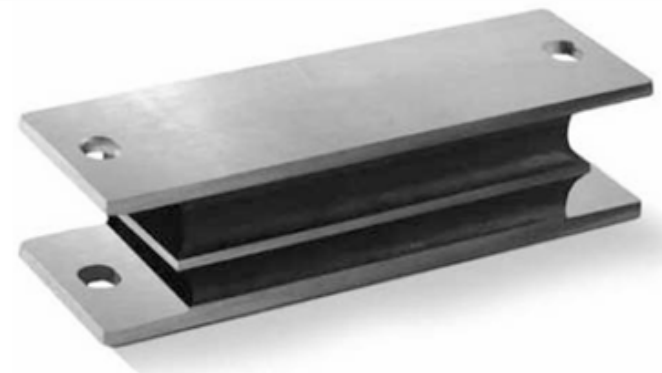




## PRODUCTS ENGIN MOUNTS (TRUCKS & BUSES)



## PRODUCTS -BUFFER



## PRODUCTS -MOUNTS & BUFFERS





# FLANGES

**SORF FLANGES, FORGED FLANGES, WELDNECK RAISED FACE FLANGES, SOCKETWELD FLANGES, THREADED FLANGES, RING TYPE JOINT FLANGES, BLIND FLANGES**

## MATERIAL

MILD STEEL / CAST CARBON STEEL, STAINLESS STEEL, FORGED CARBON STEEL

## MSF STD

BS STANDARD FLANGES, ISI MARKED FLANGES, ANSI STANDARD FLANGES, IBR FLANGES

## TABLE

D, E, F, J, H, CLASS 125. .... CLASS 150 TO CLASS 2500, ND-40



# PIPES FITTINGS

**BUTTWELD ERW PIPE FITTINGS, SEAMLESS PIPE FITTINGS, SOCKETWELD PIPE FITTINGS, MS FORGED FITTINGS, GI ISI MARKED PIPE FITTINGS, DAIRY PIPE FITTINGS, PIPE NIPPLES**

## END CONNECTION

BUTT WELD TYPE, THREADED, SOCKET WELD

## MATERIAL

MILD STEEL / CAST STEEL, STAINLESS STEEL, FORGED STEEL, GALVANIZED IRON, FORGED STAINLESS STEEL

## PRESSURE RATING

: CLASS-A, CLASS-B, CLASS-C, SCH-5, SCH-10, SCH-40, SCH-80, SCH 160, EXTRA HEAVY, LBS 1000#, LBS 3000#



# PIPES & TUBINGS

**MS ERW PIPES, CS SEAMLESS PIPES, GI PIPES IBR & NON IBR, ISI MARKED PIPES**

## SIZE

: 1/2" TO 48"

## MATERIAL

MILD STEEL/CAST CARBON STEEL, STAINLESS STEEL, GALVANIZED IRON

## PRESSURE RATING

CLASS A, B, C, SCH-5, SCH 10, SCH 40, SCH 80, SCH 160





# INDUSTRIAL VALVES

**GATE VALVES, GLOBE VALVES, CHECK VALVES, BALL VALVES, BUTTERFLY VALVES, PISTON VALVES, SLUICE VALVES, PLUG VALVES, KNIFE EDGE GATE VALVES, 3 WAY / 4 WAY BALL VALVES**

**IBR APPROVED & NON IBR, ISI & NON-ISI MARKED**

## MATERIAL

CAST IRON, CAST CARBON STEEL, STAINLESS STEEL, GUN METAL, FORGED BRASS, BRONZE, FORGED CARBON STEEL, FORGED STAINLESS STEEL, ALUMINIUM ETC

## OPERATOR:

LEVER OPERATED, GEAR OPERATED, PNEUMATIC ACTUATOR OPERATED, MOTORIZED ACTUATOR OPERATED

## END CONNECTION:

SCREWED TO BSP, BSPT, NPT, SOCKETWELD, RTJ, BUTTWELD END, FLANGED END (AS PER BS-10, ND-40, ANSI STANDARDS)

## PRESSURE RATING:

CLASS 150#, 300#, 600#, 800#, 900#, 1500#, 2500#, PN-10 TO PN-40

## MFG STANDARD:

AS PER IS, ASME, API & BS STANDARDS



# INSTRUMENTATION VALVES & SOLUTIONS

**PRESSURE RELIEF VALVES, THERMAL RELIEF VALVES, PRESSURE REDUCING VALVES, PNEUMATIC CONTROL VALVES, AUTOMATIC CONTROL VALVES**

**IBR APPROVED & NON IBR, ISI & NON-ISI MARKED**

## MATERIAL

CAST IRON, CAST CARBON STEEL, STAINLESS STEEL, GUN METAL, BRASS, FORGED STEEL, FORGED STAINLESS STEEL ETC

## PRESSURE RATING:

CLASS 150#, 300#, 600#, 800#, 900#, 1500#, 2500#

## CLASS, OPERATOR:

PILOT OPERATED, DIAPHRAGM OPERATED, PNEUMATIC ACTUATOR OPERATED, MOTORIZED VALVES

## END CONNECTION:

SCREWED TO BSPT, NPT, SOCKET WELD, RTJ, BUTT WELD END, FLANGED END (AS PER BS-10, ND-40, ANSI STANDARDS)

## MFG STANDARD:

AS PER IS, ASME, API & BS STANDARD





## VALVES FOR HVAC AND FIRE FIGHTING APPLICATION

**BALANCING VALVE, PIDCV, EXPANSION BELLOWS, FIRE HYDRANT VALVES, DUAL PLATE CHECK VALVES, SPRINKLERS, BALL VALVE WITH STRAINERS**

**ISI MARKED AND NON-ISI, FM & UL APPROVED**

### MATERIAL

Cast Iron, Cast Carbon Steel, Stainless Steel, Gun Metal, Forged Brass, Bronze, Forged Steel, Forged Stainless Steel, Aluminium

### PRESSURE RATING:

PN10, PN16, PN20, PN25, PN40



## BELLOWS

**RUBBER BELLOWS AND EXPANSION BELLOWS, SS BRAIDED HOSES, BELLOWS ACCESSORIES**

### TYPE -

SWIVEL END / FIXED END

### MATERIAL

RUBBER / METTALIC / STAINLESS STEEL / MILD STEEL

### END CONNECTION:

Screwed to BSP, BSPT, NPT, Socketweld, RTJ, Buttweld End, Flanged End (As per BS-10, ND-40, ANSI Standards)

### PRESSURE RATING:

Class 150#, 300#, 600#, 800#, 900#, 1500#, 2500#, PN-10 to PN-40





# CUSTOMIZED RUBBER PARTS

**RUBBER**



**GROMETS**



**GASKET  
PROFILES**



**CUSTOMIZED  
RUBBER PARTS**



**CUSTOM CUT MADE  
TO MEASURE**



**RUBBER DOOR  
SEALING PROFILES**





# METAL MACHINED PARTS

**METAL PARTS**



**HYDRAULIC  
FITTING**



**CUSTOM  
PARTS**



**PUMP SPARES**



**SPECIALISED  
FASTENERS**



**VALVES SPARES**

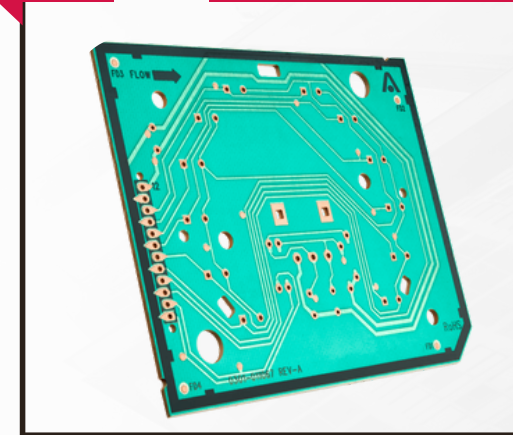




# PRINTED CIRCUIT BOARD



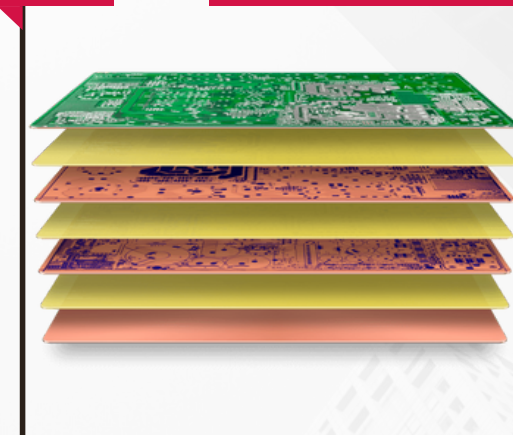
**SINGLE SIDED  
PCBs**



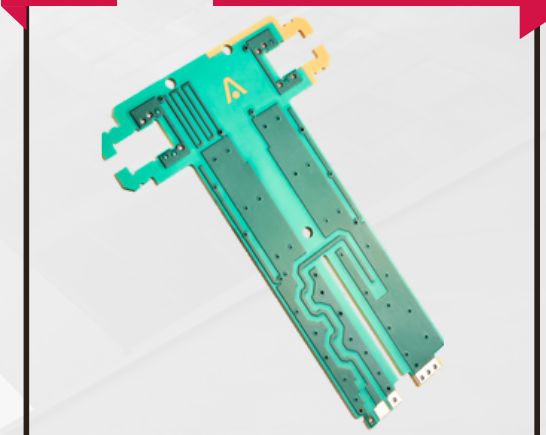
**DOUBLE  
SIDED PCBs**



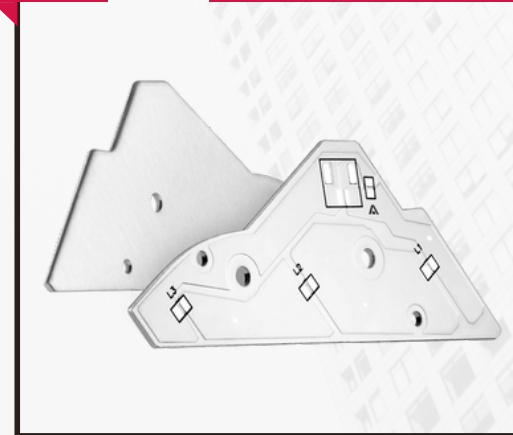
**MULTI LAYER  
PCBs**



**RF PCBs**



**ALLUMINIUM  
PCBs**



**FLEXIBLE  
PCBs**





# WE VALUE OUR CUSTOMERS

OUR UNIQUE APPROACH COMBINES DEEP ENGINEERING INSIGHT WITH COMMERCIAL INTELLIGENCE TO DELIVER MAXIMUM VALUE TO YOU. TRUST MMD SOURCING SOLUTIONS FOR:

- Proven expertise in **cost reduction**.
- A strong, diverse **global vendor network**.
- Comprehensive, **end-to-end procurement process management**.
- Reliable and **transparent supply chain management** practices.







# THANK YOU

## CONTACT US



+91-93184695985



info@mmdsolutions.co.in



Gurgaon-122001 (Haryana) INDIA

